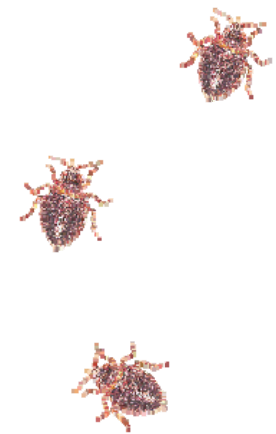


# Integrated Pest Management in Multifamily Housing



# Developed and sponsored by



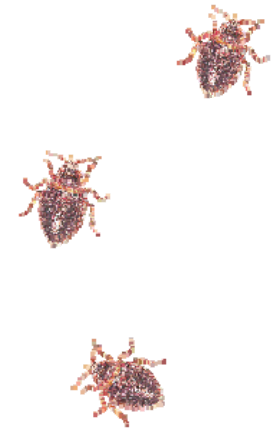
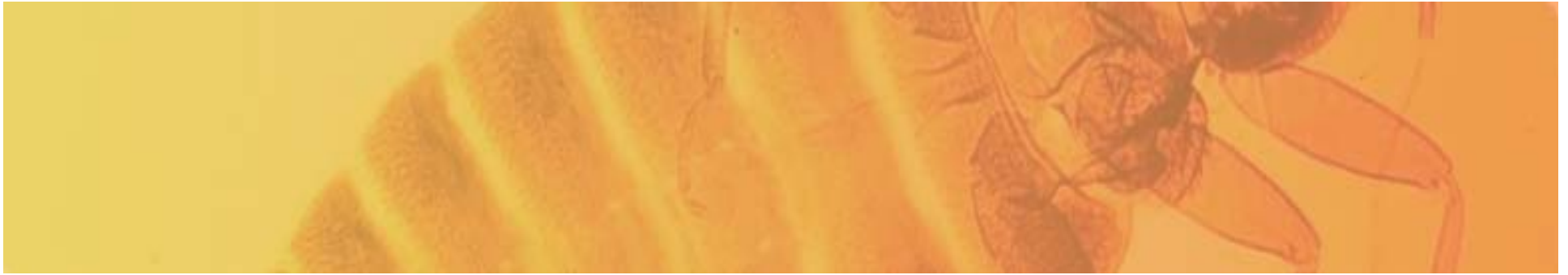
U.S. Department  
of Housing and  
Urban  
Development



Centers for  
Disease Control  
and Prevention

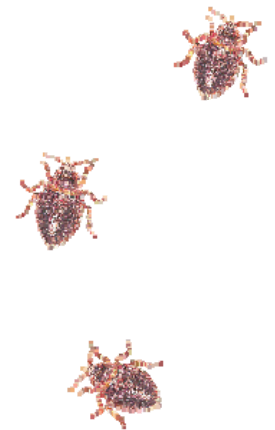


*Regional*  
**IPM**  
Centers



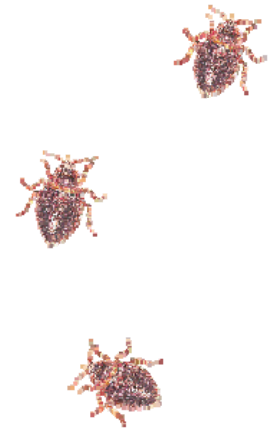
# Resources

- Networked resources are available at:
  - [www.StopPests.org](http://www.StopPests.org)
  - [www.healthyhomestraining.org/ipm/training.htm](http://www.healthyhomestraining.org/ipm/training.htm)
- The binder is yours to keep
  - Copies of presentation slides
  - HUD's Voluntary Guidance on IPM
  - Pest fact sheets

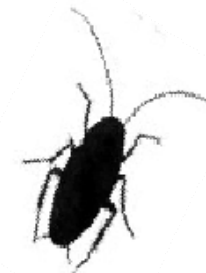


# By the end of today, you will know

- Why pests are health threats.
- How to control cockroaches, rodents, and bed bugs.
- Why Integrated Pest Management (IPM) is the most effective way to control pests.
- Your role in the IPM team.



# How have you fought pests?



# Pests cause problems

- Trigger/cause asthma and allergies
- Bite
- Contaminate food
- Lead people to overreact and ignore pesticide labels
- Transmit disease
- Hitchhike in belongings
- Violate housing codes

***IPM makes homes healthier!***

# Priority pests



- **Cockroaches** cause asthma in infants, trigger asthma attacks, and contaminate food.
- **Rodents** such as mice and rats carry diseases, bite, destroy property, may cause fires, and may trigger asthma attacks.
- **Bed Bugs** and their bites are a nuisance and are expensive to eliminate.

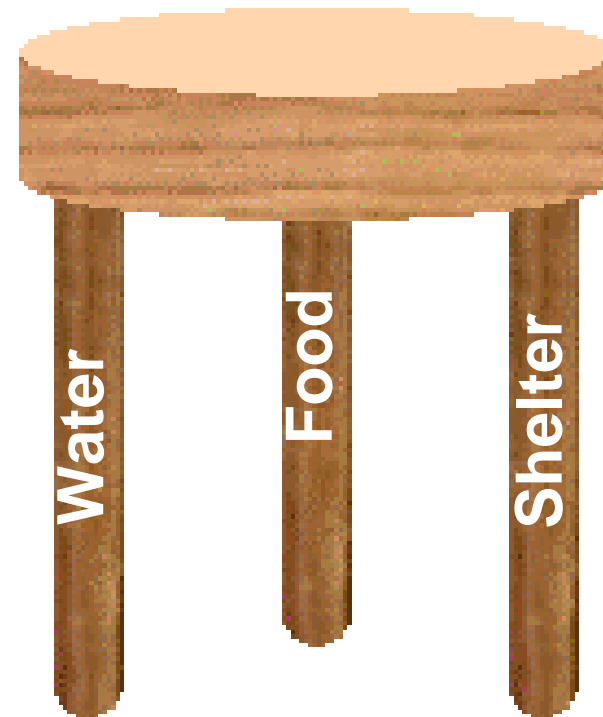
# Other public health pests



- Mosquitoes transmit West Nile Virus
  - Need standing water
- Ticks transmit Lyme Disease
  - Get on people from bushes and rodents
- Fleas cause itchy welts
  - Come into buildings on pets and wild animals
- Bird and rodent mites make us itch
  - May move into a unit when the wild host moves out
- Lice make us itch
  - Spread on used or shared items and via person-to-person contact
- Dust mites cause asthma
  - Flourish with high humidity and poor sanitation

# What all pests need

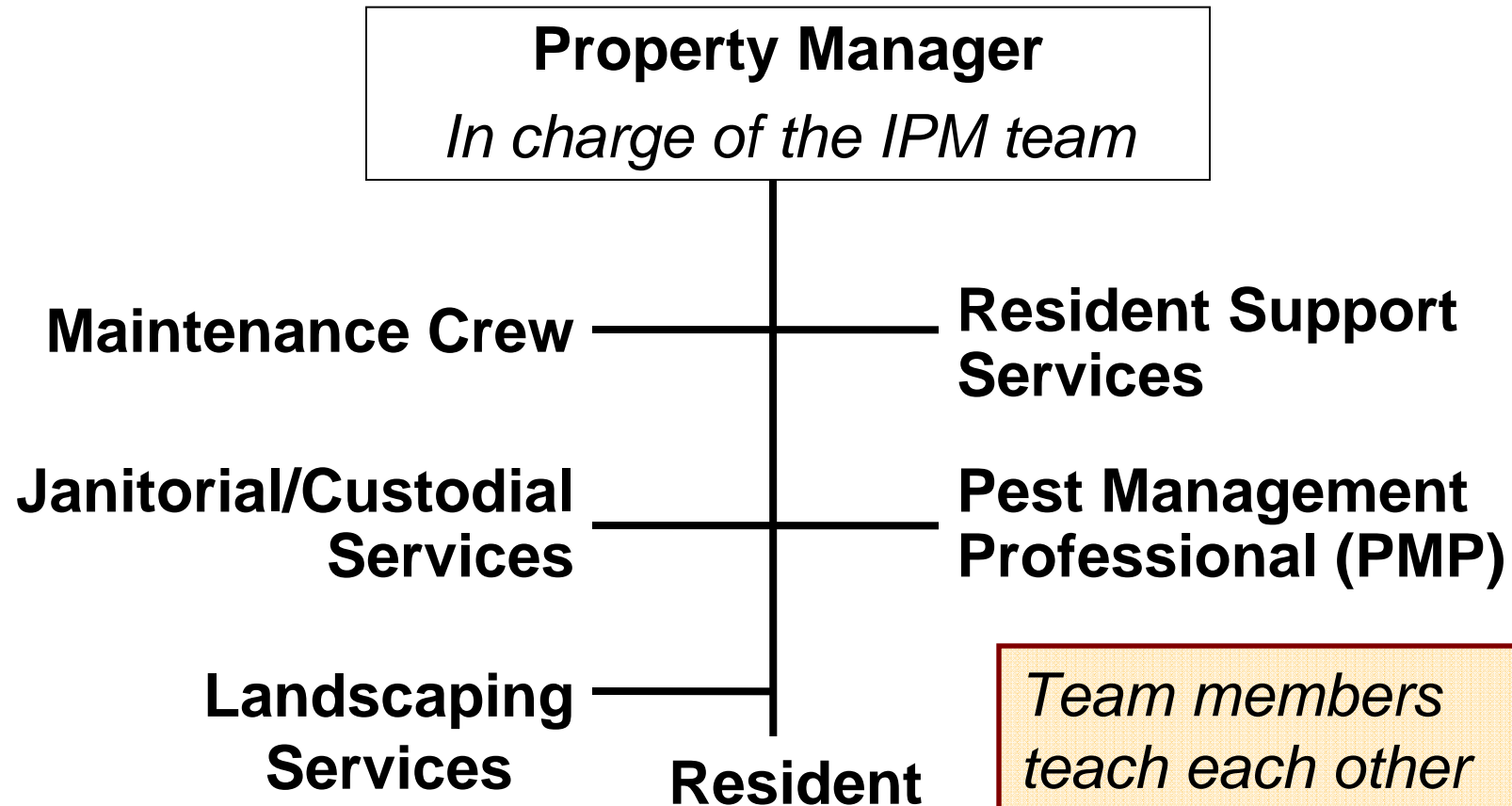
- Food
- Water
- Shelter



# What is IPM?

- **Integrated:** Uses multiple approaches that work together.
- **Pest:** What the multiple approaches work to fight.
- **Management:** Use of the most economical means with the least possible risk to people, property, and the environment.

# The IPM team



*Team members teach each other and document what they see and do.*

# How will you fight pests now?

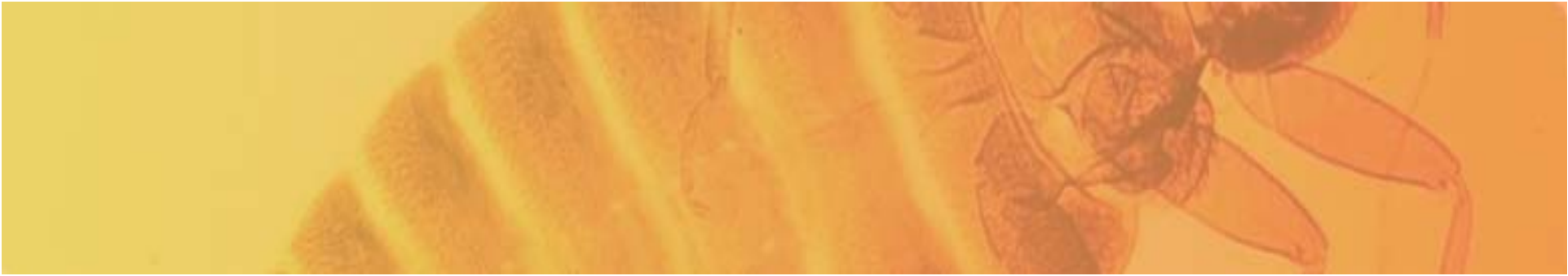
“Exterminator” is now a  
Pest Management Professional (PMP)



# What you will gain

IPM will give you...

- **A healthier building:** Fewer asthma attacks, less exposure to pesticides, and less of a chance you will take pests home.
- **Fewer complaints:** A Boston Housing Authority development reduced cockroach work orders by 68% after one year of IPM.
- **Fewer pests:** You can stop infestations from growing and spreading disease.



*“We do IPM because it is the right thing to do and because it works. Allowing our residents to live in a pest-free home is a basic service as well as a huge quality of life issue.”*

—Gail Livingston

Director of Operations and Property Management  
Boston Housing Authority

# What position do you have on the IPM team?

Introductions

